

NCL – Nested Context Language

Douglas Paulo de Mattos
douglas@midia.com.uff.br





Agenda

- Estrutura do Documento NCL
- Exemplos
- Executando
- Ferramentas
- Livro e Tutoriais

Estrutura do Documento NCL

```
<?xml version="1.0" encoding="ISO-8859-1"?>  
<ncl id="nomeDoc" xmlns="http://www.ncl.org.br/NCL3.0/EDTVProfile">  
  <head>  
    <regionBase/> ... <descriptorBase/>  
    <connectorBase/> ... <ruleBase/> ... <importBase/>  
  </head>  
  <body>  
    <port/> ... <media/>... <switch/>  
    <context/> ... <link/>  
  </body>  
</ncl>
```



Exemplos

- ▶ Vídeo interativo com menu
- ▶ Vídeo com legendas

Vídeo interativo com menu

➤ Visão Espacial



Vídeo interativo com menu

➤ Visão Espacial



Vídeo interativo com menu

➤ Visão Espacial



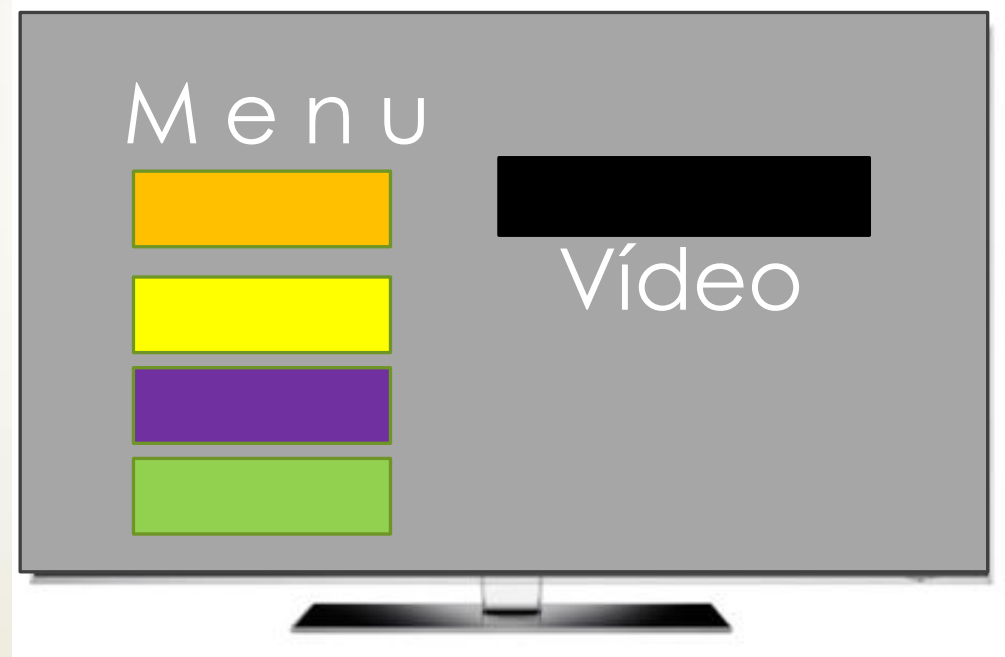
Vídeo interativo com menu

➤ Visão Espacial



Vídeo interativo com menu

➤ Visão Espacial



Vídeo interativo com menu

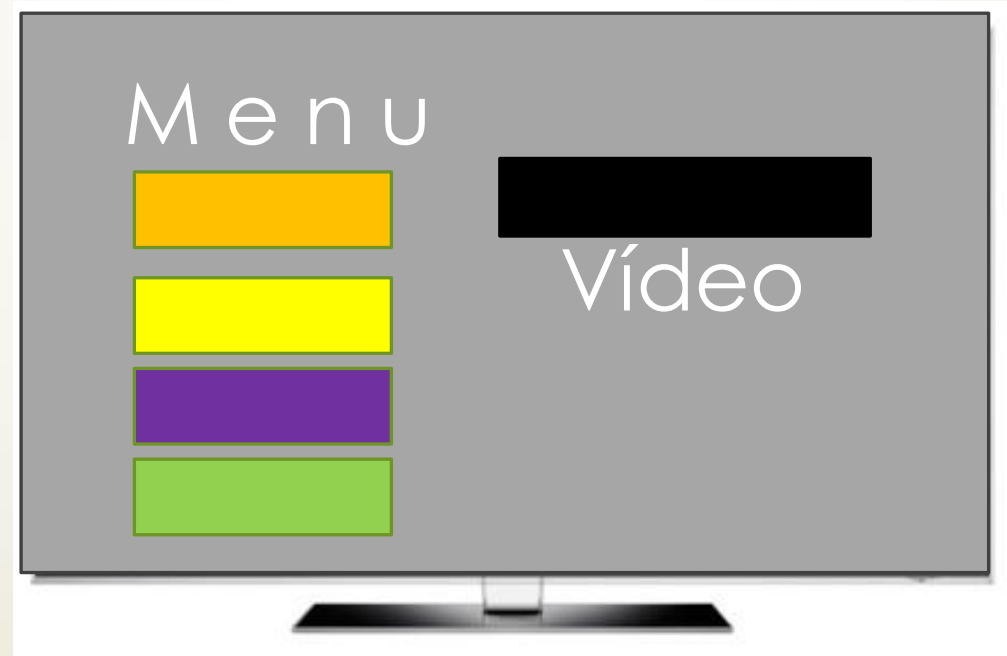
➤ Visão Espacial



Informações sobre
o vídeo

Vídeo interativo com menu

➤ Visão Espacial



Vídeo com legendas

➤ Visão Espacial





Executando

- ▶ VMware Player

- ▶ https://my.vmware.com/web/vmware/free#desktop_end_user_computing/vmware_player/5_0

- ▶ Máquina Virtual Ginga

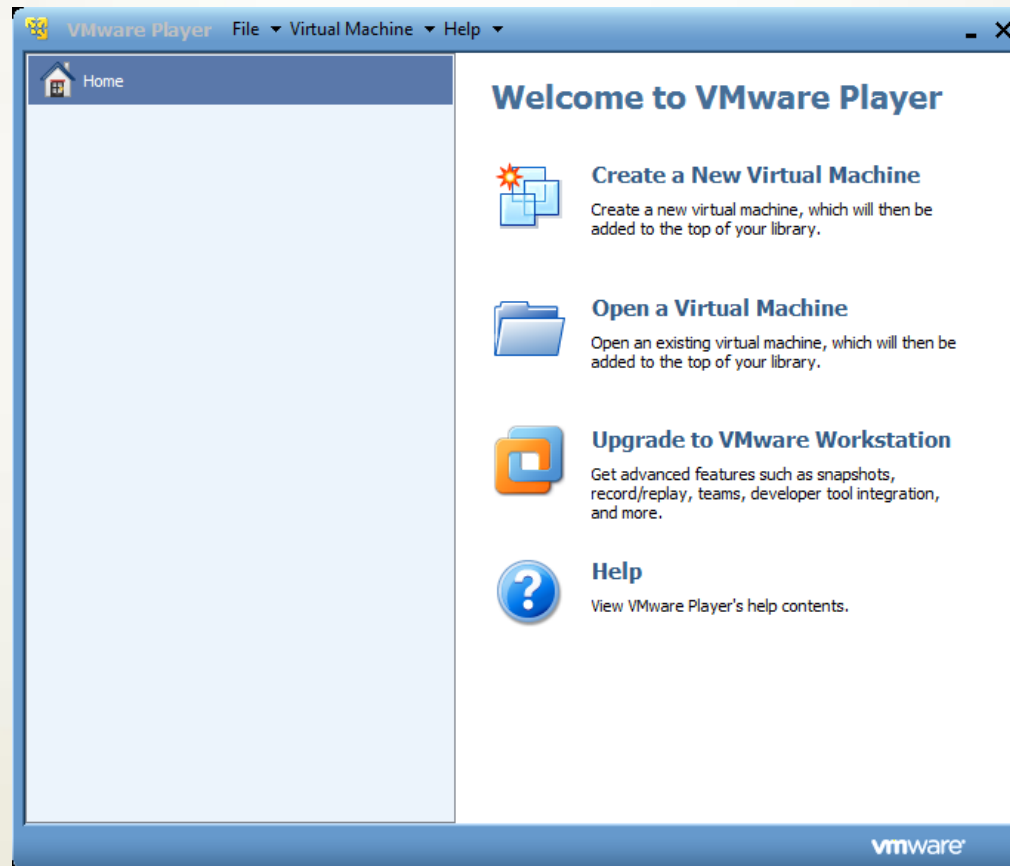
- ▶ <http://www.gingancl.org.br/en/ferramentas>

- ▶ SSH Secure Shell

- ▶ <http://www.baixaki.com.br/download/ssh-secure-shell.htm>

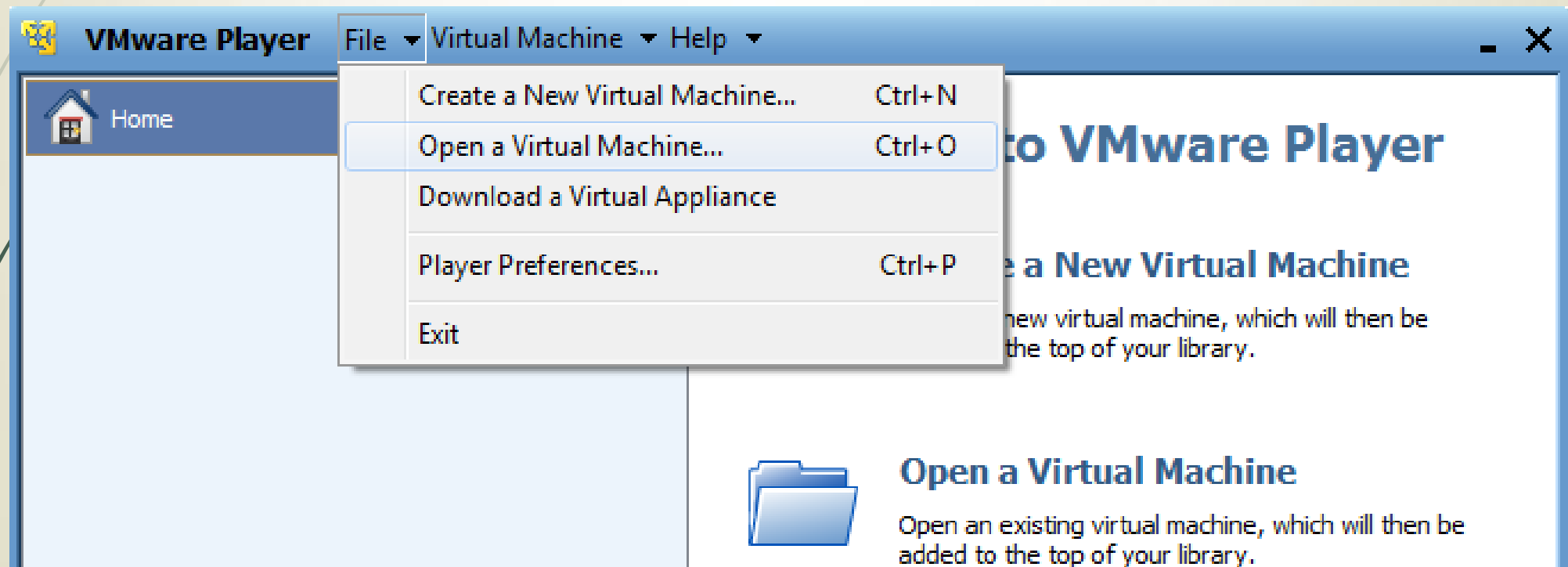
Executando

VMware Player



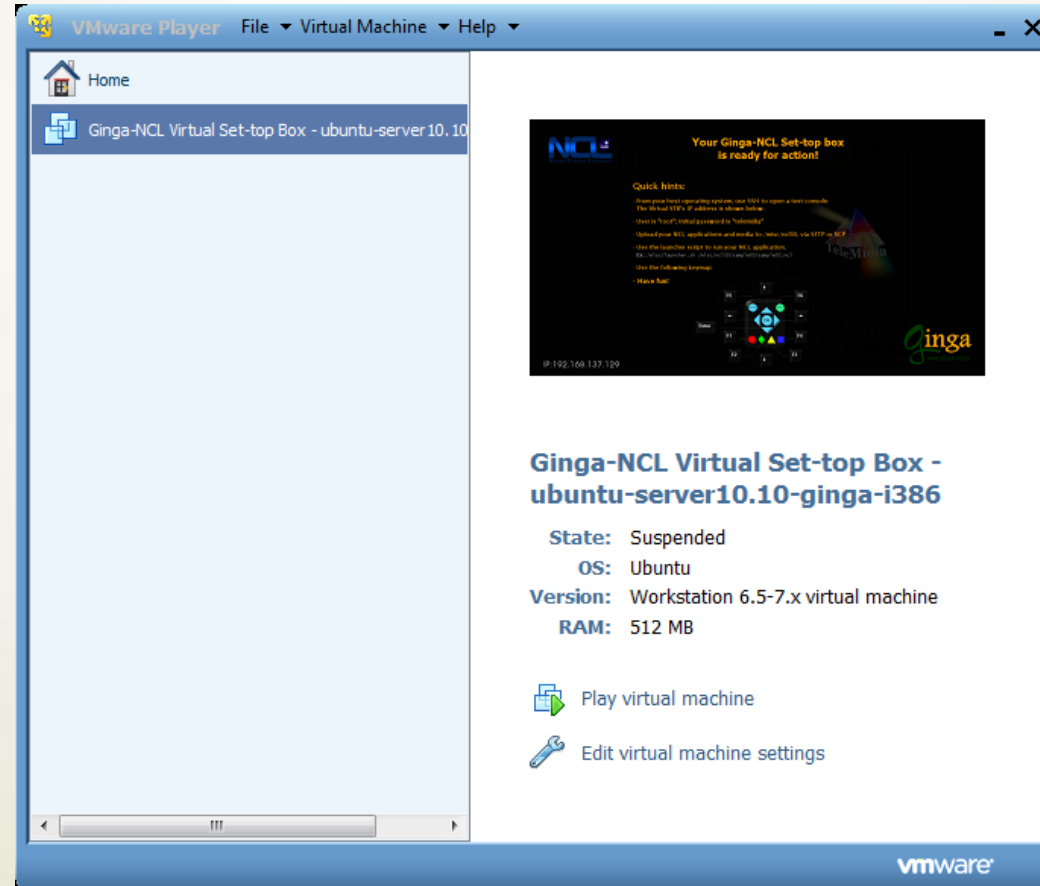
Executando

VMware Player



Executando

VMware Player



Executando

→ Ginga

Ginga-NCL Virtual Set-top Box - ubuntu-server10.10-ginga-i386 - VMware Player File Virtual Machine Help

NCL
NESTED CONTEXT LANGUAGE

Your Ginga-NCL Set-top box is ready for action!

Quick hints:

- From your host operating system, use SSH to open a text console. The Virtual STB's IP address is shown below.
- User is "root"; Initial password is "telemidia"
- Upload your NCL applications and media to /misc/ncl30, via SFTP or SCP
- Use the launcher script to run your NCL application.
EX.: /misc/launcher.sh /misc/ncl30/sample03/sample03.nc1
- Use the following keymap:
- Have fun!

IP:192.168.137.129

Enter

F5 F6
F1 F4
F2 F3

ginga
www.ginga.org.br

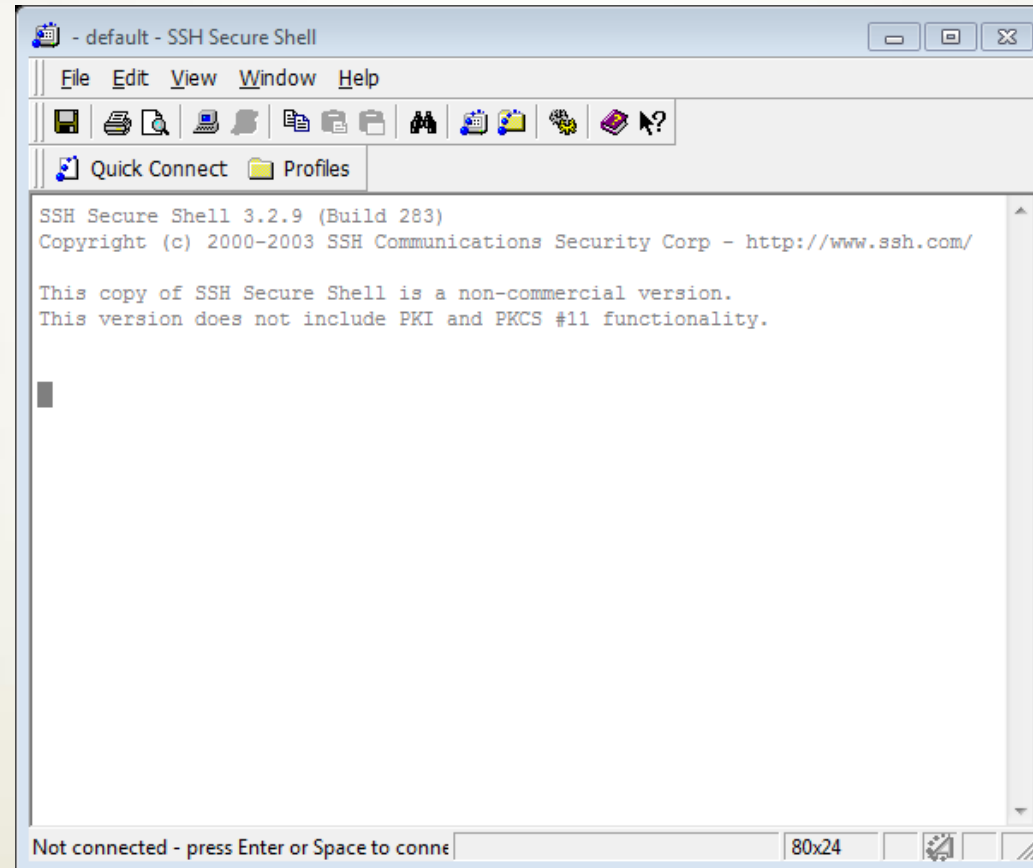
TeleMídia

To direct input to this virtual machine, press Ctrl+G.

vmware

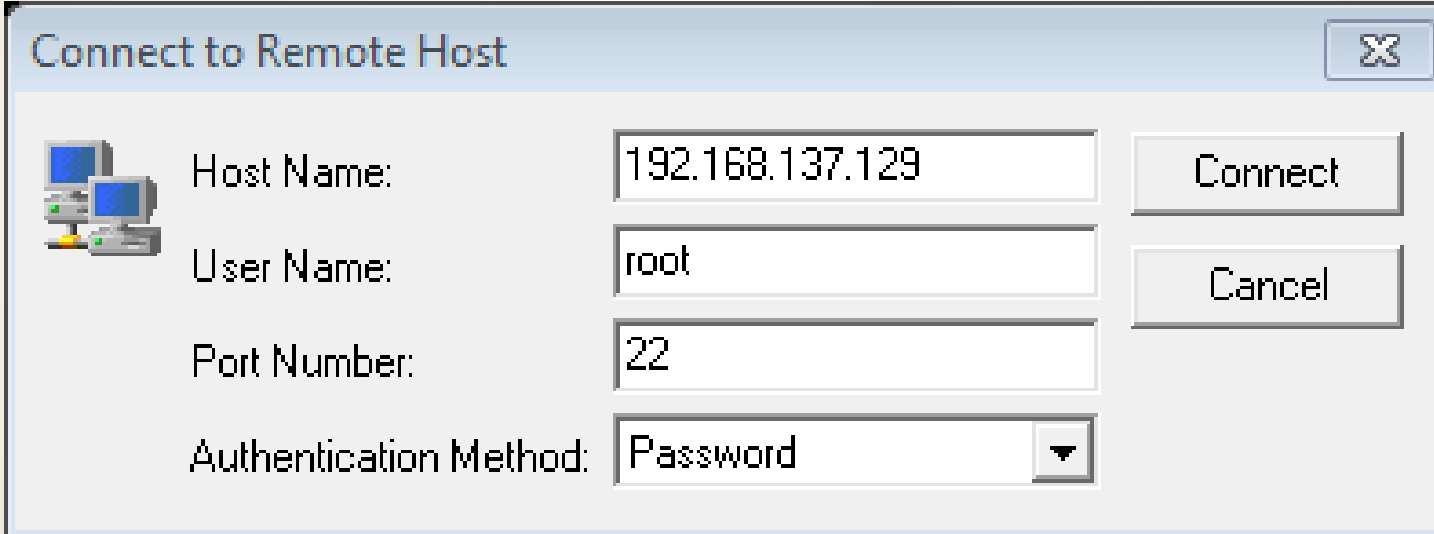
Executando

→ SSH




Executando

→ SSH



Connect to Remote Host

 Host Name: 192.168.137.129

User Name: root

Port Number: 22

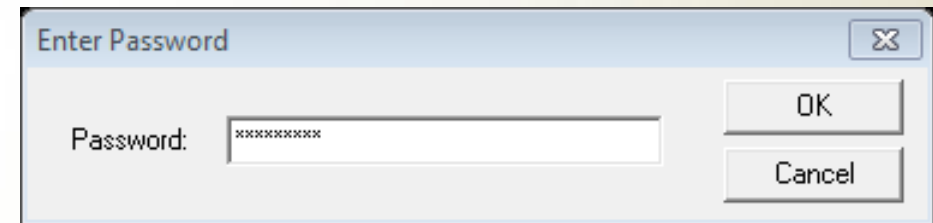
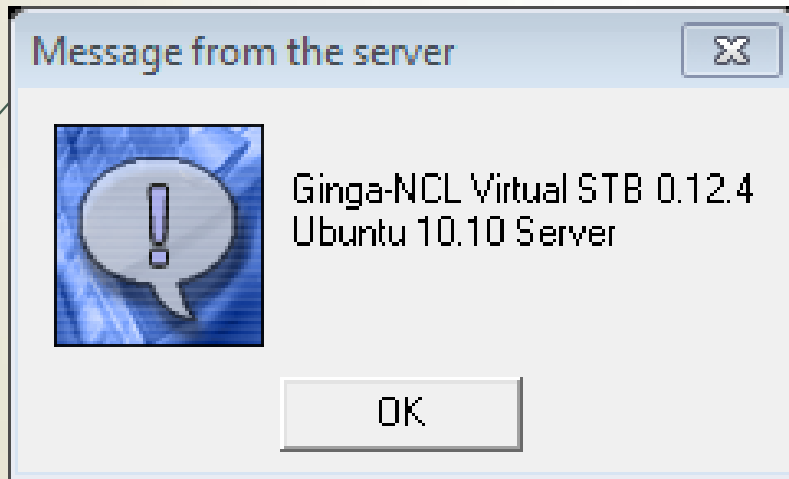
Authentication Method: Password

Connect

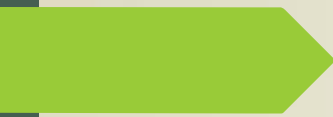
Cancel

Executando

→ SSH



telemidia



1:192.168.137.129 - Ginga-NCL - SSH Secure Shell

File Edit View Window Help

Quick Connect Profiles

SSH Secure S
Copyright (c
This copy of
This version

Ginga-NCL Vi
Ubuntu 10.10

Welcome to G
New release
Run 'do-rele
Last login:
root@gingavm

2:192.168.137.129 - Ginga-NCL - SSH Secure File Transfer

isc/ncl30

File Edit View Operation Window Help

Quick Connect Profiles

Local Name	Size	Type	Remote Name	Size	Type
Bibliotecas		Pasta do.	Exemplos		Folder
Grupo doméstico		Pasta do.	Trab1		Folder
Douglas		Pasta do.			
Computador		Pasta do.			
Rede		Pasta do.			
Painel de Controle		Pasta do.			
Lixeira		Pasta do.			
Painel de Controle		Pasta do.			

Transfer | Queue |

Source File	Source Directory	Destination Dire...	Size	Status	Speed	Time
-------------	------------------	---------------------	------	--------	-------	------

Connected to 192.168.137.129 - /misc/ SSH2 - aes128-cbc - hmac-md5 - n 2 items (0 Bytes)

Connected to 192.168.137.129 SSH2 - aes128-cbc - hmac-md5 - n 80x24

misc/ncl30



Ferramentas

- NCL Eclipse

- [\[http://laws.deinf.ufma.br/ncleclipse/pt-br:install#instalacao_via_update_site\]](http://laws.deinf.ufma.br/ncleclipse/pt-br:install#instalacao_via_update_site)

- Notepad++

- <http://notepad-plus-plus.org/download/v6.5.5.html>

- NCL4Web

- [\[http://www.midiacom.uff.br/~caleb/ncl4web\]](http://www.midiacom.uff.br/~caleb/ncl4web)

Mais Exemplos

➤ Clube NCL

➤ <http://clube.ncl.org.br/>



NCL – Nested Context Language

Douglas Paulo de Mattos
douglas@midia.com.uff.br

